

Meetings & Event Guide.

HOTEL OMNI MONT-ROYAL

EXPERIENCES MATTER HERE



OMNI
MONT-ROYAL



Right in the MIDDLE OF IT ALL.

Located near grand museums, innovative art galleries and stunning architecture from centuries past, Hotel Omni Mont-Royal is close to some of the city's most desirable sights. Guest rooms are adorned in simple elegance, and two delightful restaurants range from a French bistro to an upscale 1970s homage.

With 23,000 square feet of thoughtful meeting and event space, Hotel Omni Mont-Royal caters to conferences, keynote addresses, and meetings of all types. Two welcoming ballrooms are available for larger events, along with smaller spaces for pre- or post-meeting mingling. Our event managers can assist with catering, video conferencing and guest accommodations for attendees, leaving you free to focus on the business at hand.



about Hotel Omni Mont-Royal.

OLD WORLD ELEGANCE AND BONHOMIE

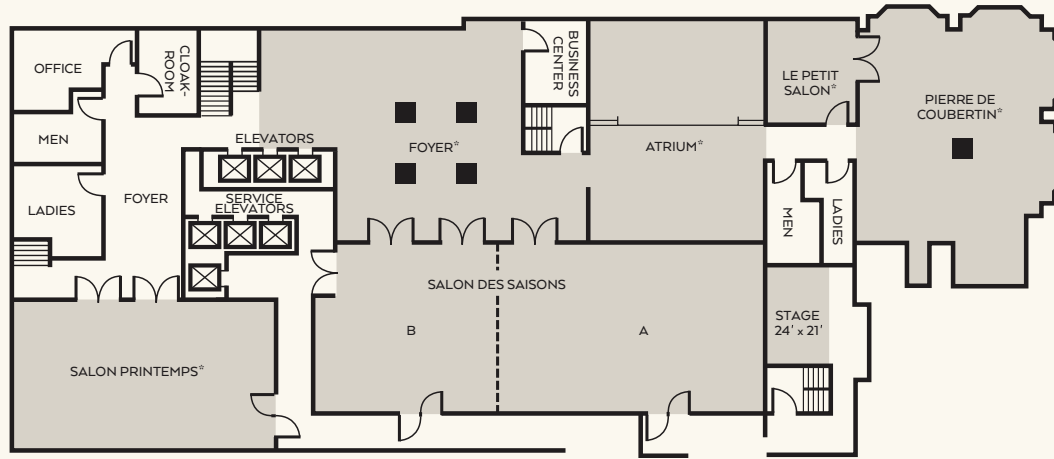
Hotel Omni Mont-Royal is a timeless escape in a timeless city. Your guests will feel firmly rooted in the culture of downtown Montreal, with wide windows to highlight expansive city views or the slope of Mont Royal. Two on-site restaurants - Le Petit Opus Café and Alice Bar welcome colleagues to catch up and collaborate.



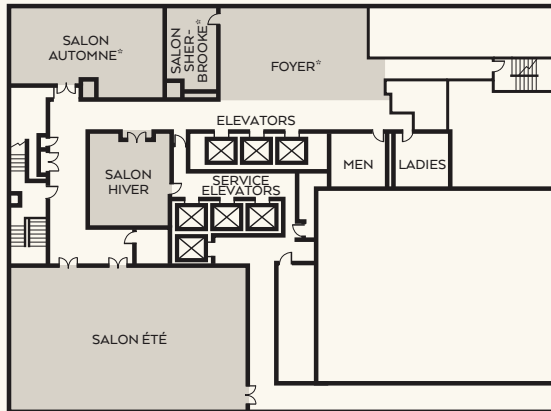
- 299 elegant guest rooms and suites with warm, sophisticated design features and views of Montreal
- 23,000 square feet of flexible meeting, event and pre-function space, including two handsome ballrooms and 14 comfortable meeting rooms
- On-site audiovisual equipment services offering the latest technology and Wi-Fi internet access
- Two unique restaurants including 1970s-meets-modern Alice Bar featuring recipes collected by local artist Alice Winant, and French bistro Le Petit Opus Café for European all-day dining
- Expansive state-of-the-art fitness center featuring Cybex equipment, free weights and cardio machines, plus indoor hot tub

Flexible, Next Generation Event & Meeting Space.

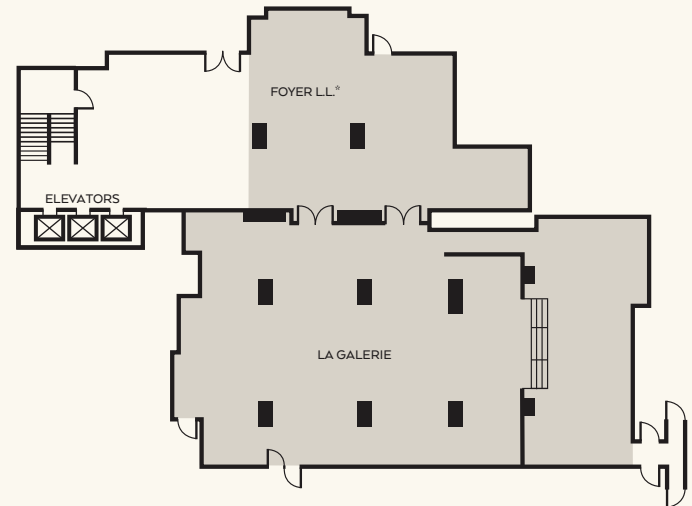
FIRST FLOOR



SECOND FLOOR



LOWER LEVEL



	SURFACE		CEILING HEIGHT		U-SHAPE		HOLLOW SQUARE	THEATRE	CONFERENCE	CLASSROOM		ROUNDS	1/2 ROUNDS/ CRESCENT ROUNDS 4-5 PERS	EXHIBITS			RECEPTION
	METERS	SQUARE FEET	METERS	FEET	2 PER/6'	3 PER/6'				2 PER/6'	3 PER/6'			8-10 PERS	6' X 6'	8' X 8'	
FIRST FLOOR																	
SAISONS A&B	410	4410	4.27	14	68	97	114	480	80	192	288	320/400	160/200	27	32	22	484
SAISONS A	242	2610	4.27	14	38	63	80	300	40	108	130	160/200	80/100	19	17	10	284
SAISONS B	163	1755	4.27	14	30	45	60	180	34	48	72	188/160	94/80	8	9	16	189
PRINTEMPS	185	1972	3	10	36	54	65	180	48	72	110	144/180	72/90	13	10	6	211
PIERRE DE COUBERTIN	251	2700	4.27	14	38	44	56	180	40	100	144	200/250	100/125	19	17	11	316
PETIT SALON	37	400	4.27	14	10	15	20	20	14	12	18	24/30	15	-	1	1	25
ATRIUM	152	1638	7.01	23	-	-	-	-	-	-	-	-	-	10	6	4	174
FOYER 1	249	2680	2.77	9	-	-	-	-	-	-	-	-	-	-	-	-	285
SECOND FLOOR																	
ETE	177	1904	3.07	10	36	54	65	180	48	72	110	136/170	68/85	15	10	6	205
AUTOMNE	69	738	3.07	10	20	26	30	55	25	20	28	40/50	20/25	-	2	-	79
HIVER	37	396	3.07	10	10	15	20	20	18	12	18	24/30	12/15	-	-	-	-
SHERBROOKE	22	241	3.07	10	-	-	-	-	10	-	-	-	-	1	-	-	-
FOYER 2	107	1152	3.07	10	-	-	-	-	-	-	-	-	-	-	-	-	76
LOWER LEVEL																	
LA GALERIE	316	3400	2.74	9	34	51	54	144	48	48	72	192/240	96/120	14	14	10	229
FOYER LL	184	1981	2.48	8.15	-	-	-	-	-	-	-	-	-	14	14	14	134

MEETING ROOM CAPACITIES WERE DETERMINED USING 72" ROUNDS OF 10 (ROUNDS CAPACITY), THREE CHAIRS PER 6'X30" TABLE (U-SHAPE CAPACITY) AND THREE CHAIRS PER 6'X18" TABLE (CLASSROOM CAPACITY) ALLOWING FOR MINIMAL AUDIOVISUAL EQUIPMENT.



A wide-angle photograph of the Minneapolis skyline at dusk. The sky is a deep blue with scattered white clouds. The city skyline is visible in the background, featuring several prominent buildings, including the Minneapolis City Hall with its large, ornate dome. The buildings are illuminated with lights, and their reflections are visible in the water. In the foreground, there is a body of water, likely the Minneapolis Water Garden, which reflects the city lights and the sky. A small bridge or walkway is visible in the middle ground, and a row of trees lines the shore. The overall scene is a vibrant and scenic view of a city at twilight.

French-speaking Montreal combines a European atmosphere with a vibrant art, dining and entertainment scene. Take a walking tour of the city's varied architecture, ranging from 18th-century gems to a wealth of 20th-century Art Deco. Explore fine art, Canadian history and natural wonders at the many area museums. Discover it all by bike—Montreal is one of the most bike-friendly cities in North America.

Montréal-Pierre Elliott Trudeau International Airport (YUL) | 20 min

Mary, Queen of the World Cathedral | 4 blocks
Mont-Royal Park | 5 blocks
Bell Centre | 6 blocks
Festival Quartier | 8 blocks
Old Montreal Historical Quarter | 10 blocks
Notre-Dame Basilica | 10 blocks
Chinatown | 9 min

- Barbie Expo | 1 block
- McCord Museum of Canadian History | 4 blocks
- Museum of Fine Arts | 4 blocks
- Contemporary Art Museum | 4 blocks
- Redpath Museum | 5 blocks
- Canadian Centre for Architecture | 12 blocks
- Centre PHI | 8 min
- Quartier des Spectacles | 9 min
- Montreal Museum of Archaeology and History | 12 min

Percival Molson Stadium, home of the Montreal Alouettes | 4 blocks
IGA Stadium | 20 min
Saputo Stadium, home of CF Montréal | 25 min