

# Meetings & Event Guide.

OMNI LOS ANGELES HOTEL  
AT CALIFORNIA PLAZA

EXPERIENCES MATTER HERE



OMNI  
LOS ANGELES





# Congregate and collaborate IN DTLA.

Sitting atop Bunker Hill, Omni Los Angeles Hotel at California Plaza is located at the heart of DTLA. Welcome meeting attendees and event guests to connect at the creative epicenter of California.

Design the ultimate meeting or event across over 30,000 square feet of flexible indoor and outdoor function space. Four new distinct outdoor spaces welcome you to make the most of Los Angeles' famously sunny weather. Whether you're organizing an intimate gathering or a grand gala, our versatile spaces are designed to meet your needs. Exclusive to Omni Los Angeles Hotel, these unique outdoor venues provide the perfect oasis in the heart of Angel City.



# *about* Omni Los Angeles Hotel at California Plaza.

## DOWNTOWN ELEGANCE AND SOCIAL STYLE

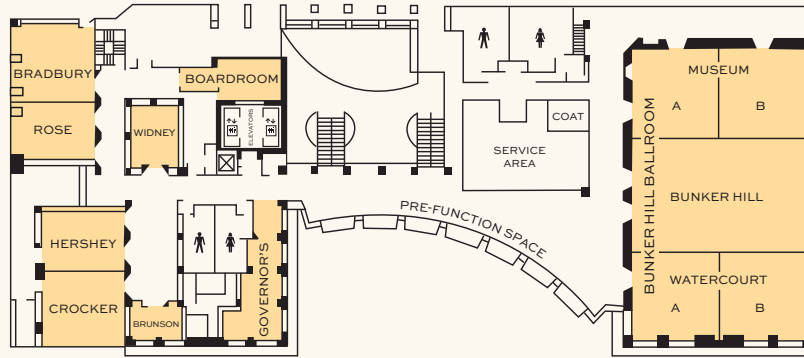
Inviting guest rooms are designed with contemporary style, most featuring views of the LA skyline. An outdoor heated lap pool invites you to enjoy SoCal weather year-round and an on-site restaurant offering the best of Californian cuisine.



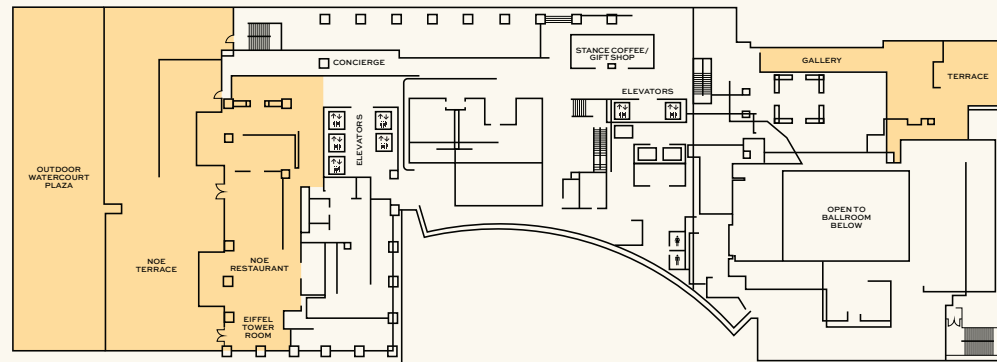
- 453 spacious guest rooms with views of Bunker Hill or California Plaza Watercourt
- 30,000 square feet of flexible indoor and outdoor meeting, event and pre-function space, including the 8,520 square foot Bunker Hill Ballroom and nine war rooms
- Four distinct outdoor event spaces including NOÉ Terrace with dramatic cityscape view, MOCA Terrace adjacent to the pool deck with views of the MOCA Museum, The Plaza lined with mature trees and the expansive Yard with built-in stage, amphitheater seating and space for up to 3,000 guests
- Fast Wi-Fi, the latest AV technology and helpful professional services
- Outdoor heated lap pool and lounge area with fire pits
- Two unique bars and restaurants include NOÉ Restaurant & Bar with a seasonal California menu in a romantic setting and lunch and Stance Coffee Bar for fresh coffee, pastries and sandwiches
- A 1,500 square foot fitness center with weight training and cardio equipment

# Flexible, Next Generation Event & Meeting Space.

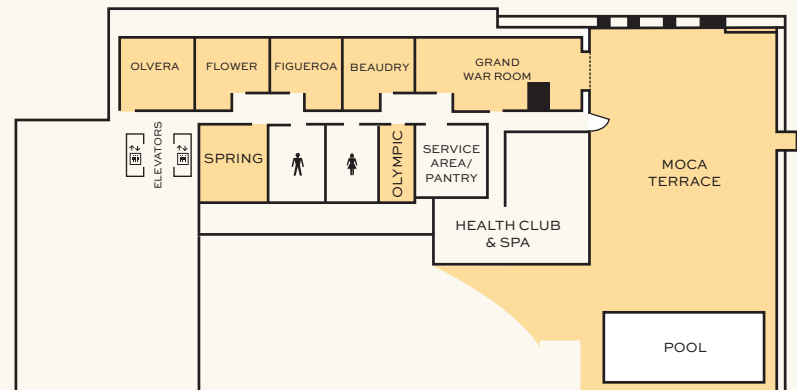
LEVEL TWO



LEVEL THREE

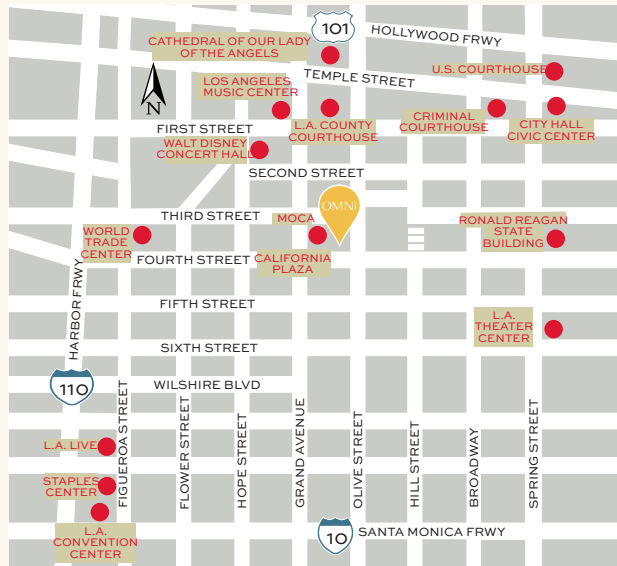


LEVEL FOUR





	SQUARE FOOTAGE	DIMENSIONS	CEILING HEIGHT	PORTABLE WALLS	THEATER	CLASSROOM	BANQUET	RECEPTION	CONFERENCE	U-SHAPE
SECOND FLOOR										
BUNKER HILL BALLROOM	8,520	71' x 120'	19'	YES	1000	450	850	1000	—	—
BUNKER HILL	3,266	71' x 46'	19'	YES	350	180	250	350	80	—
MUSEUM A	1,225	35' x 35'	14'	YES	110	50	90	110	40	27
MUSEUM B	1,225	35' x 35'	14'	YES	110	50	90	110	40	27
MUSEUM A & B	2,485	71' x 35'	14'	YES	220	100	180	220	80	54
BUNKER HILL/MUSEUM A & B	5,751	71' x 81'	19'/14'	YES	570	280	430	570	160	54
WATERCOURT A	1,260	35' x 36'	14'	YES	110	50	90	110	40	27
WATERCOURT B	1,260	35' x 36'	14'	YES	110	50	90	110	40	27
WATERCOURT A & B	2,556	71' x 36'	14'	YES	220	100	180	220	80	54
BUNKER HILL/WATERCOURT A & B	5,822	71' x 82'	19'/14'	YES	570	280	430	570	160	—
BRADBURY	1,122	34' x 33'	12'	YES	70	40	60	70	30	25
ROSE	825	25' x 33'	12'	YES	60	35	50	60	25	22
BRADBURY/ROSE	1,947	59' x 33'	12'	YES	150	90	140	150	55	45
HERSHEY	936	26' x 36'	12'	YES	60	35	50	60	25	22
CROCKER	1,044	29' x 36'	12'	YES	70	40	60	70	30	25
HERSHEY/CROCKER	1,980	55' x 36'	12'	YES	150	90	140	150	55	45
GOVENOR'S	702	26' x 27'	12'	NO	40	18	40	40	25	18
WIDNEY	456	19' x 24'	12'	NO	40	18	30	40	20	—
BOARDROOM	450	25' x 18'	12'	NO	—	—	—	—	18	—
BRUNSON	350	25' x 14'	12'	NO	—	—	—	—	12	—
THIRD FLOOR										
GALLERY	2,473	74.5' x 32.2'	9.5'	NO	130	50	180	180	30	26
GALLERY TERRACE	702	27' x 26'	—	—	—	—	—	—	—	—
NOE TERRACE	882	42' x 21'	—	—	—	—	—	—	—	—
EIFFEL TOWER ROOM (In Noe Restaurant)	330	26.4' x 12.5'	9.5'	NO	—	—	20	20	25	—
OUTDOOR WATERCOURT PLAZA	7,371	117' x 63'	—	NO	—	—	—	—	—	—
FOURTH FLOOR										
GRAND WAR ROOM	792	33' x 24'	8'	NO	—	—	—	—	—	—
BEAUDRY	551	29' x 19'	8'	NO	40	24	30	40	20	20
FIGUEROA	551	29' x 19'	8'	NO	40	24	30	40	20	20
FLOWER	551	29' x 19'	8'	NO	40	24	30	40	20	20
OLVERA	551	29' x 19'	8'	NO	40	24	30	40	20	20
SPRING	551	29' x 19'	8'	NO	40	24	30	40	20	20
OLYMPIC	216	12' x 18'	8'	NO	20	—	10	20	10	—
MOCA TERRACE	1,953	31' x 63'	—	NO	—	—	—	—	—	—



**OMNI LOS ANGELES HOTEL AT CALIFORNIA PLAZA**  
**251 SOUTH OLIVE STREET**  
**LOS ANGELES, CALIFORNIA 90012**

**213.356.4099**  
**LAXCTRLEADS@OMNIHOTELS.COM**

# Los Angeles *highlights.*

Explore the revitalized cultural hub that is downtown Los Angeles. World-class creative institutions like the Museum of Contemporary Art and Walt Disney Concert Hall sit beside towering skyscrapers and chic restaurants and boutiques. Explore legendary neighborhoods like Hollywood and Beverly Hills, with their leafy palms and aura of possibility.

## AIRPORTS

Burbank Bob Hope Airport | 12 Miles  
 Los Angeles International Airport | 15 miles

## ATTRACTIONS

Angels Flight | 1 block  
 Los Angeles Civic Center, Los Angeles City Hall and courthouses | 3 blocks  
 Little Tokyo | 9 blocks  
 Los Angeles Convention Center | 10 blocks  
 Chinatown | 11 blocks  
 Olvera Street | 12 blocks  
 Koreatown | 12 min  
 TCL Chinese Theatre (Grauman's) | 20 min  
 Universal Studios Hollywood | 20 min

## ARTS & CULTURE

Museum of Contemporary Art | adjacent  
 The Broad Museum | 1 block  
 Colburn School | 1 block  
 Los Angeles Music Center | 1 block  
 Los Angeles Opera | 1 block  
 Mark Taper Forum | 1 block  
 Walt Disney Concert Hall | 1 block  
 The GRAMMY Museum | 5 min  
 Natural History Museum of LA County | 4 miles  
 California Science Center | 4 miles

## SPORTS

Crypto.com Arena, home of LA Lakers and NHL LA Kings | 5 min  
 Dodger Stadium, home of MLB LA Dodgers | 8 min  
 BMO Coliseum, home of Angel City Football Club | 10 min  
 Rose Bowl Stadium | 20 min  
 SoFi Stadium, home of the LA Rams | 24 min  
 Intuit Dome, home of the LA Clippers | 24 min

