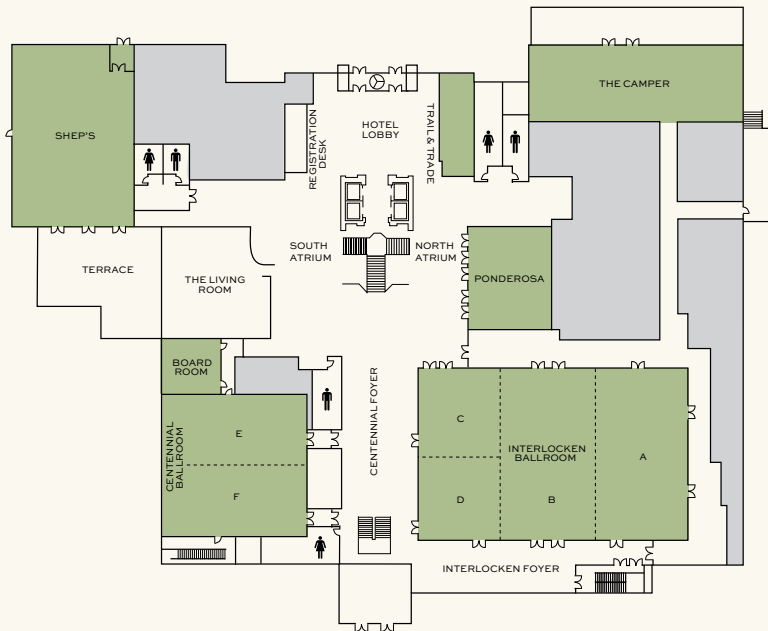
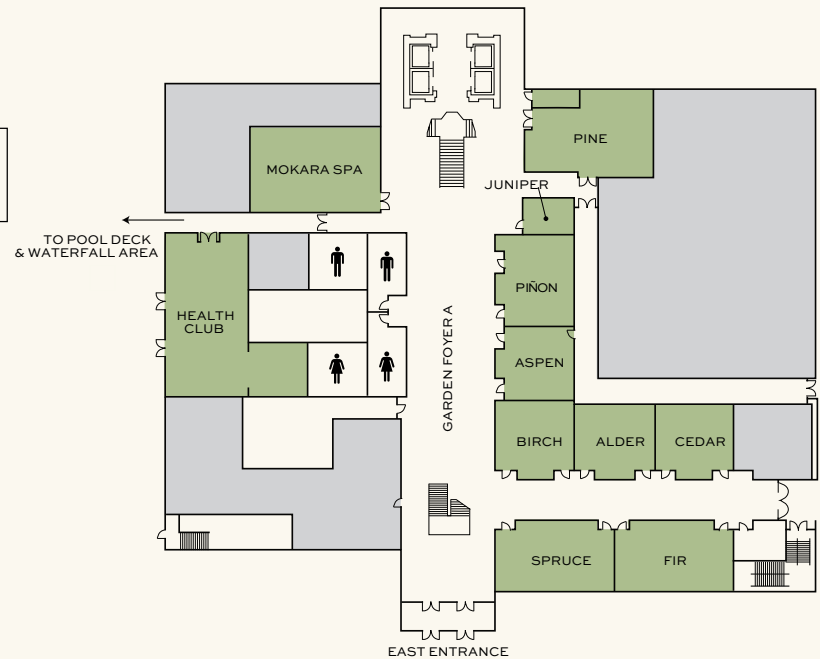


Flexible, Next Generation Event & Meeting Space.

LOBBY LEVEL



GARDEN LEVEL



Room Name	Floor	Square Footage	Dimensions	Ceiling Height	Theater	Conference	U-Shape	Hollow Square	Classroom 3 per 6	Classroom 2 per 6	Banquet 60" (10)	Banquet 72" (12)	Reception	6' Table Top Exhibits	Exhibits 8x10	Exhibits 10 x 10
Interlocken Ballroom	1ST	9120	120' X 76'	16'	1100	-	-	-	541	362	644	700	947	100	56	52
Interlocken Ballroom A	1ST	3040	76' X 40'	16'	280	60	66	78	162	110	220	204	316	30	18	15
Interlocken Ballroom B	1ST	3496	76' X 40'	16'	360	60	69	84	195	130	240	240	368	34	21	17
Interlocken Ballroom C	1ST	1428	32' X 42'	16'	140	32	41	42	81	54	30	72	153	13	9	7
Interlocken Ballroom D	1ST	1156	34' X 34'	16'	128	26	36	42	66	44	80	72	121	10	-	-
Centennial Ballroom	1ST	4096	64' X 64'	12'	420		72	90	231	154	250	300	421	37	26	20
Centennial Ballroom E	1ST	2048	32' X 64'	12'	210	48	57	60	126	86	140	144	211	24	12	10
Centennial Ballroom F	1ST	2048	32' X 64'	12'	210	48	57	60	126	86	140	144	211	24	12	10
Atrium	1ST	4611	-	32'	-	-	-	-	-	-	-	-		21	9	7
Centennial Foyer	1ST	2120	28' X 68'	32'	-	-	-	-	-	-	-	-	211	15	10	5
Interlocken Foyer	1ST	2064	20' X 70'	12'	-	-	-	-	-	-	-	-	211	15	6	5
Ponderosa	1ST	1628	37' X 44'	11'	128	32	36	42	75	24	80	96	100	17	-	-
Boardroom	1ST	567	21' X 27'	12'	60	16	19	20	36	24	40	48	40		-	-
Garden Foyer A	GARDEN	3000	75' X 25'	10'	-	-	-	-	-	-	-	-	-	-	7	7
Garden Foyer B	GARDEN	1148	14' X 91'	10'	-	-	-	-	-	-	-	-	-	-	-	-
Pine	GARDEN	1185	44' X 29'	10'6"	114	32	36	42	63	42	70	72	75	-	-	-
Spruce	GARDEN	850	40.5' X 21'	10'6"	90	32	35	40	36	30	60	48	60	-	-	-
Fir	GARDEN	850	40.5' X 21'	10'6"	90	32	35	40	36	30	60	48	60	-	-	-
Birch	GARDEN	648	27' X 24'	10'6"	60	20	23	26	30	16	40	48	40	-	-	-
Alder	GARDEN	648	27' X 24'	10'6"	60	20	23	26	30	16	40	48	40	-	-	-
Cedar	GARDEN	648	27' X 24'	10'6"	60	20	23	26	30	16	40	48	40	-	-	-
Aspen	GARDEN	624	26' X 24'	10'6"	60	18	24	30	20	20	40	48	35	-	-	-
Pinion	GARDEN	638	29' X 22'	10'6"	70	20	24	28	28	20	40	48	-	-	-	-
Juniper	GARDEN	224	14' X 16'	10'6"	-	8	-	-	-	-	10	-	-	-	-	-
Pool Deck	OUTDOORS	-	-	-	-	-	-	-	-	-	150	-	200	-	-	-
Shep's Terrace	OUTDOORS	1280	-	-	-	-	-	-	-	-	-	-	50	-	-	-
Fairways Tent	OUTDOORS	3000	50' X 60'	-	-	-	-	-	-	-	240	-	-	-	-	-
Fairways Terrace	OUTDOORS	-	-	-	-	-	-	-	-	-	-	-	100	-	-	-
Pavilion	OUTDOORS	4750	95' X 50'	12'	-	-	-	-	-	-	320	-	475	-	-	-

MEETING ROOM CAPACITIES WERE DETERMINED USING 72" ROUNDS OF 10 (ROUNDS CAPACITY), THREE CHAIRS PER 6'X30" TABLE (U-SHAPE CAPACITY) AND THREE CHAIRS PER 6'X18" TABLE (CLASSROOM CAPACITY) ALLOWING FOR MINIMAL AUDIOVISUAL EQUIPMENT.