

Meeting & Event Guide

OMNI PGA FRISCO RESORT & SPA



OMNI
PGA FRISCO

Property Overview

Located 30 miles north of downtown Dallas, Omni PGA Frisco Resort & Spa stands as Texas' premier meeting destination, offering a rich tapestry of local flavor through its authentic design, exceptional amenities, and outstanding service.

Beyond the championship golf and extensive spa amenities, the resort features thirteen diverse on-site food and beverage outlets, along with unique retail offerings. Whether you're planning a small gathering or a large-scale event, the variety of flexible indoor and outdoor meeting and event spaces provide scenic backdrops and gracious hospitality, ensuring every event is a memorable success.



RESORT LOBBY



ONE BEDROOM SUITE

Resort Highlights

ACCOMMODATIONS

- 500 distinctive guest rooms and suites with subtle nods to Texas culture and spectacular views of the lush fairways
- 10 luxurious four-bedroom Ranch House Villas, ideal for groups seeking a spacious and private getaway
- Concierge Service and Select Guest Loyalty Program

MEETING & EVENT SPACE

- 127,000 square feet of event space
- Two spacious ballrooms that offer nearly 34,000 square feet of event space
- 19 meeting rooms
- Nine flexible outdoor venues that offer an array of scenic backdrops
- 5,000 square foot indoor/outdoor pavilion

13 DISTINCT DINING OPTIONS

- Trick Rider offers upscale steak and seafood in a warm and truly Texan setting
- The Apron serves creative Texas and California fare with spectacular views of Fields Ranch
- Ryder Cup Grille provides scenic golf course views and all-American fare
- Ice House showcases slow-smoked BBQ, a house-made Dr. Pepper BBQ Sauce, and six live-hitting bays
- Lounge by Topgolf features Tex-Mex inspired cuisine and five swing suites, which offer an array of games

CHAMPIONSHIP GOLF

- Two 18-hole championship golf courses, Fields Ranch East (designed by Gil Hanse) and Fields Ranch West (designed by Beau Welling)
- The Swing, a lighted 10-hole, par-3 short course
- The Dance Floor, a 2-acre putting course and entertainment area
- PGA District, home to ample play options, unique simulations, coaching experiences and more
- At the PGA Coaching Center, guests experience modern coaching philosophies, state-of-the-art technology, and a strong golf community, all guided by a certified PGA Coach.

SPA & WELLNESS

- 20 Treatment Rooms offering massage, facials, and body treatments
- Group wellness breaks
- Hydrotherapy, Steam, and Infrared Sauna
- Private pool sanctuary with eight poolside cabanas
- Wellness-driven foods including lite bites, healthy juices, elixirs, and sweet treats
- Full-Service Salon offering hair, make-up and nail services



TRICK RIDER



FIELDS RANCH GOLF COURSE

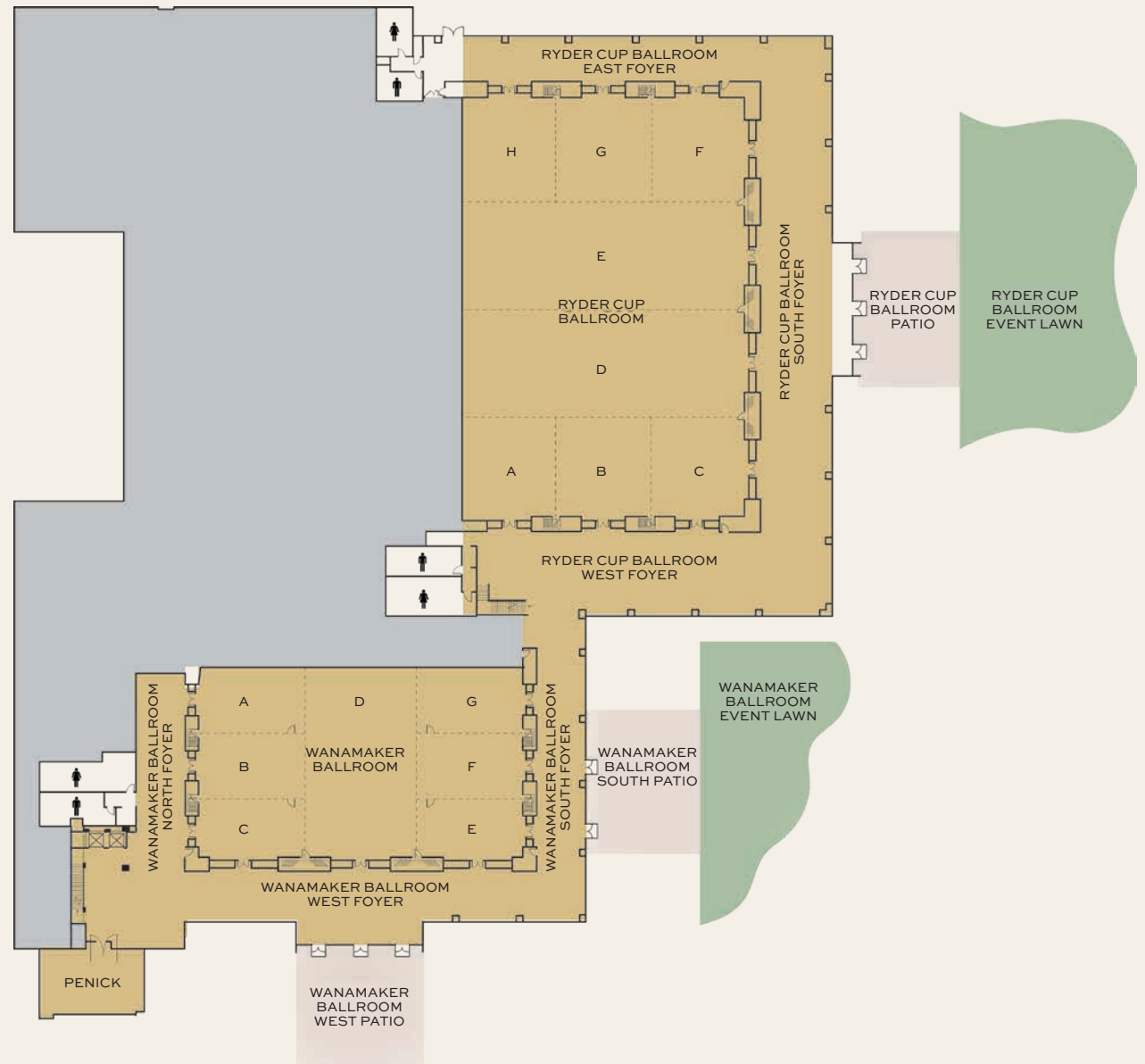


MOKARA SPA

Meeting & Event Space



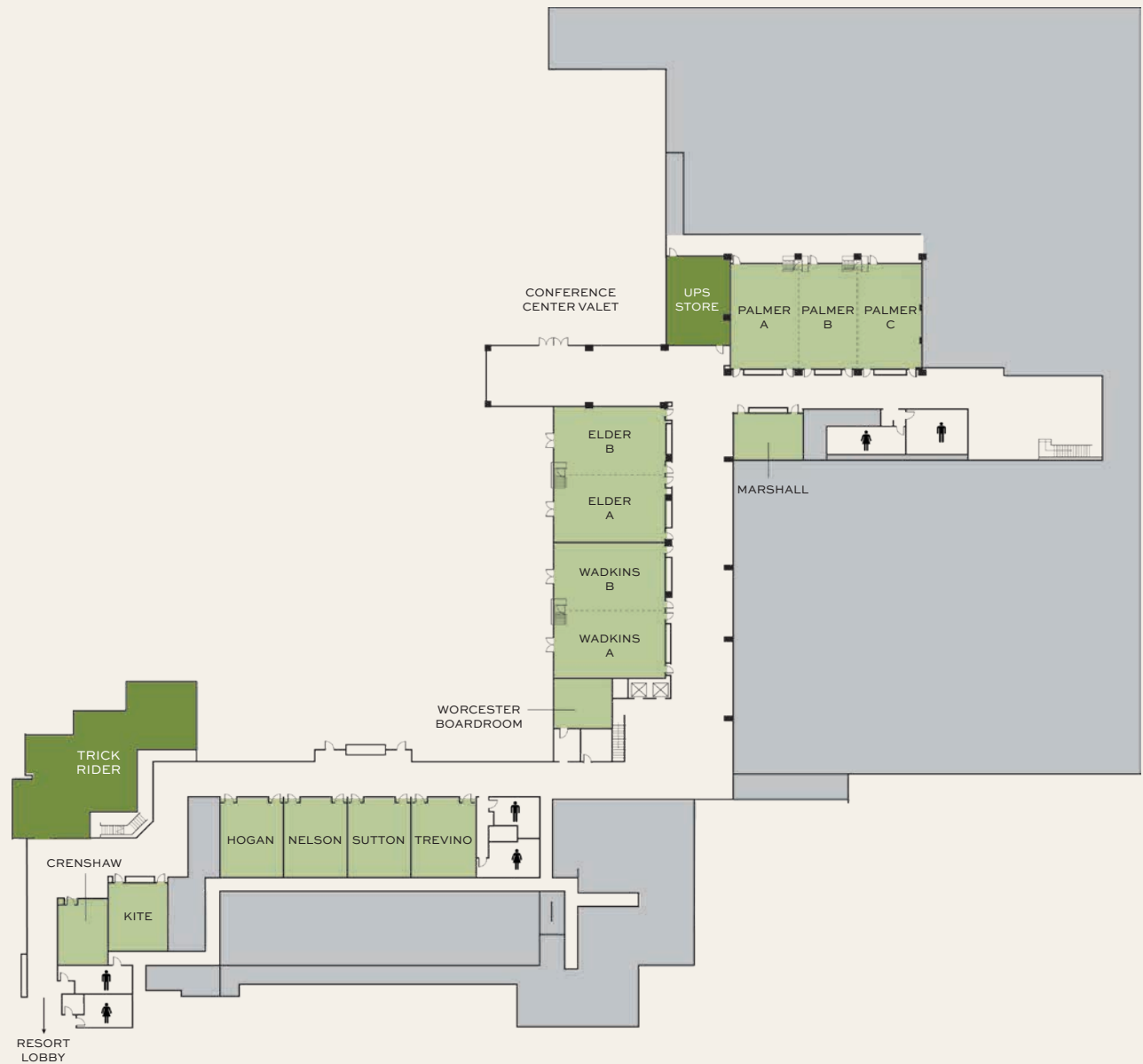
Ballroom Level



	DIMENSIONS L X W	SQUARE FOOTAGE	THEATRE	CLASSROOM	RECEPTION	ROUNDS OF 10	CRESCENT ROUNDS OF 7	CONFERENCE	U-SHAPE	HOLLOW SQUARE
BALLROOM LEVEL										
RYDER CUP BALLROOM	127 x 186	23,622	1,500	1,380	1,511	1,260	882	-	-	-
A	46 x 43	1,978	126	120	129	90	63	36	45	54
B	46 x 41	1,886	126	120	129	90	63	36	45	54
C	46 x 43	1,978	126	120	129	90	63	36	45	54
D	47 x 127	5,969	364	345	372	320	224	114	123	144
E	47 x 127	5,969	364	345	372	320	224	114	123	144
F	47 x 40	1,880	126	120	129	90	63	36	45	54
G	47 x 41	1,927	126	120	129	90	63	36	45	54
H	47 x 40	1,880	126	120	121	90	63	36	45	54
A,B	83 x 46	3,818	230	210	235	210	147	72	87	96
A-C	127 x 46	5,842	364	345	372	320	224	-	-	-
A-D	127 x 93	11,811	742	726	750	700	490	-	-	-
A-E	127 x 140	17,780	1,150	1,080	1,099	1,100	770	-	-	-
B,C	83 x 46	3,818	230	210	236	210	147	72	87	96
D,E	127 x 94	11,938	742	726	760	700	490	-	-	-
D-H	127 x 140	17,780	1,150	1,080	1,112	1,100	770	-	-	-
E-H	127 x 93	11,811	742	726	750	700	490	-	-	-
F,G	83 x 46	3,818	230	210	235	210	147	72	87	96
F-H	127 x 47	5,969	385	360	385	300	210	-	-	-
G,H	83 x 46	3,818	230	210	243	210	147	72	87	96
FOYER	-	16,399	-	-	984	900	-	-	-	-
SOUTH FOYER	249' x 33'	8,896	-	-	534	360	-	-	-	-
EAST FOYER	150' x 19'	2,875	-	-	173	130	-	-	-	-
WEST FOYER	156' x 36'	4,628	-	-	277	250	-	-	-	-
PATIO	68' x 46'	3,218	-	-	170	70	-	-	-	-
EVENT LAWN	74' x 142'	8,060	598	-	900	880	-	-	-	-

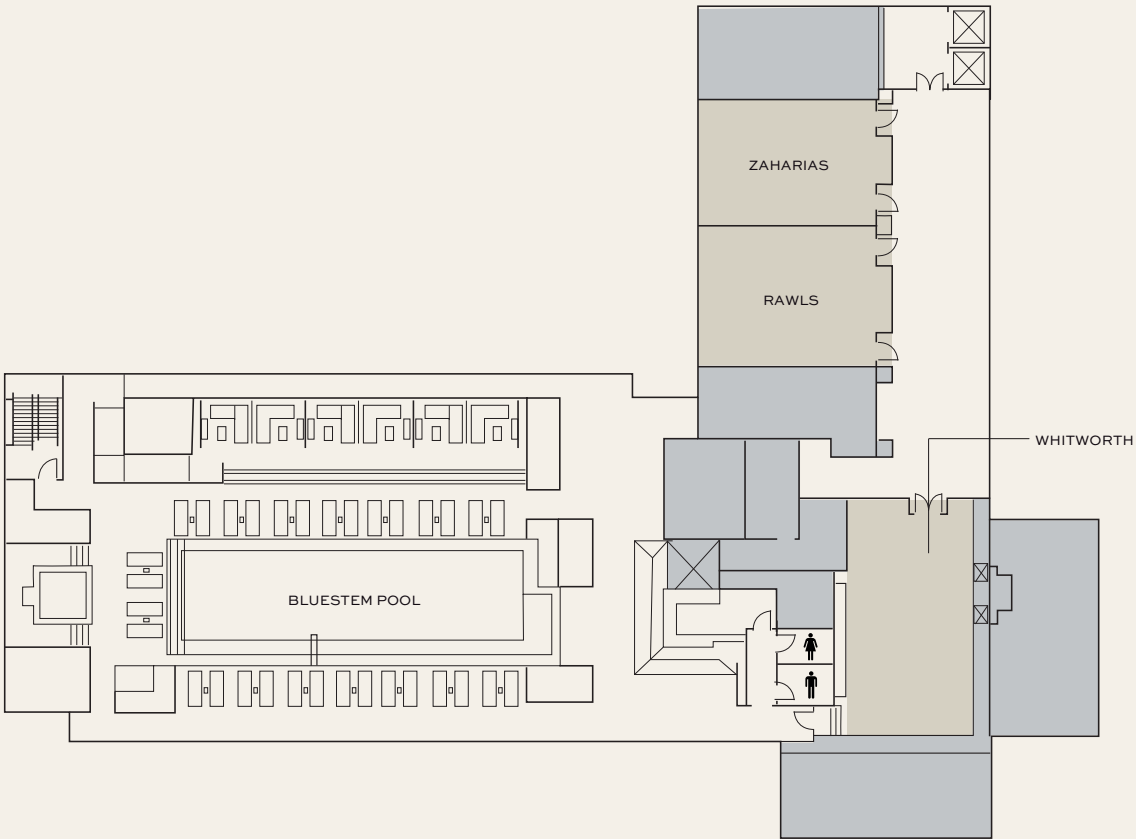
	DIMENSIONS L X W	SQUARE FOOTAGE	THEATRE	CLASSROOM	RECEPTION	ROUNDS OF 10	CRESCENT ROUNDS OF 7	CONFERENCE	U-SHAPE	HOLLOW SQUARE
BALLROOM LEVEL										
WANAMAKER BALLROOM	82 x 142	11,644	712	702	712	660	462	-	-	-
A	46 x 27	1,242	80	63	80	60	42	36	36	42
B	46 x 28	1,288	80	63	80	60	42	36	36	42
C	46 x 27	1,242	80	63	80	60	42	36	36	42
D	50 x 82	4,100	246	234	246	240	168	72	84	102
E	46 x 27	1,242	80	63	80	50	35	36	36	42
F	46 x 28	1,288	80	63	80	60	42	36	36	42
G	46 x 27	1,242	80	63	80	60	42	36	36	48
A,B	46 x 55	2,530	160	135	160	120	84	42	54	66
A-C	46 x 82	3,772	233	225	233	180	126	72	81	96
A-D	82 x 96	7,872	479	468	505	420	294	84	108	144
B,C	46 x 55	2,530	160	135	160	120	84	42	54	66
D-G	82 x 96	7,872	479	468	479	420	294	84	108	144
E,F	46 x 55	2,530	153	135	153	120	84	42	54	66
E-G	46 x 82	3,772	233	225	233	180	126	72	81	96
F,G	46 x 55	2,530	160	135	160	120	84	42	54	66
FOYER	-	9,552	-	-	635	400	-	-	-	-
WEST FOYER	182 x 21	4,648	-	-	250	190	-	-	-	-
SOUTH FOYER	131 x 24	2,851	-	-	190	110	-	-	-	-
NORTH FOYER	85 x 22	2,053	-	-	136	110	-	-	-	-
SOUTH PATIO	61 x 42	2,540	-	-	169	110	-	-	-	-
WEST PATIO	56 x 51	2,854	-	-	190	110	-	-	-	-
EVENT LAWN	-	5,715	475	-	250	170	-	-	-	-
PENICK	46 x 27	1,242	63	48	68	50	35	36	36	N/A

Second Level



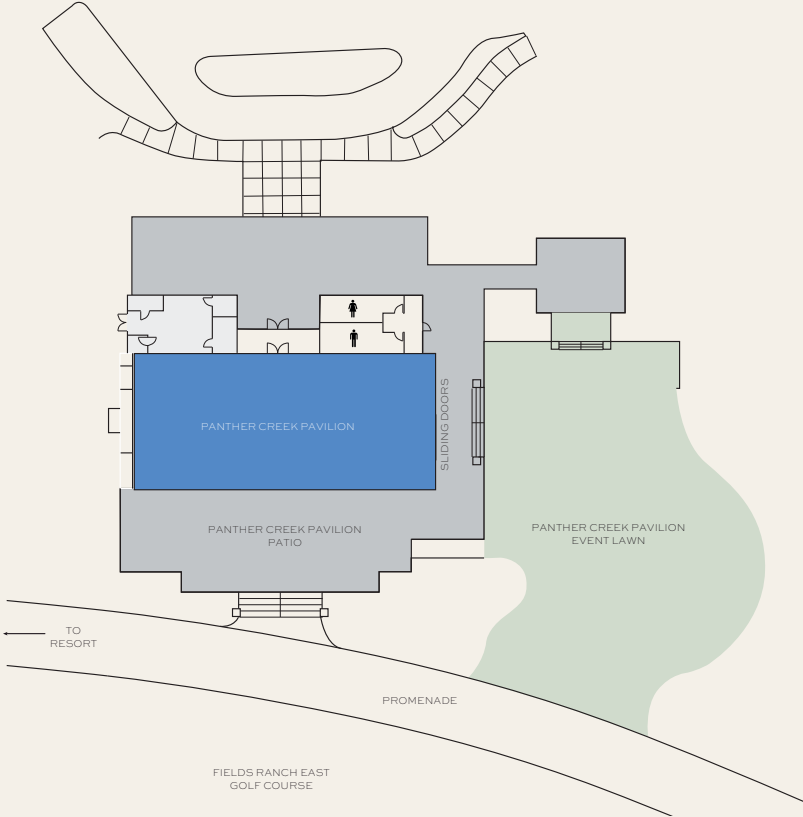
	DIMENSIONS L X W	SQUARE FOOTAGE	THEATRE	CLASSROOM	RECEPTION	ROUNDS OF 10	CRESCENT ROUNDS OF 7	CONFERENCE	U-SHAPE	HOLLOW SQUARE
SECOND LEVEL										
PALMER	46 x 80	3,680	224	135	235	180	126	72	81	90
A	46 x 28	1,288	72	45	84	60	42	30	33	36
B	46 x 25	1,150	72	45	72	60	42	30	30	30
C	46 x 27	1,242	72	45	79	60	42	30	33	45
MARSHALL	21 x 33	693	42	30	48	20	14	24	21	24
ELDER	50 x 56	2,800	168	150	175	150	105	48	57	66
A	50 x 28	1,400	72	72	87	70	49	36	39	42
B	50 x 28	1,400	72	72	87	70	49	36	39	42
WADKINS	50 x 56	2,800	168	150	175	150	105	48	57	66
A	50 x 28	1,400	72	72	87	70	49	36	39	42
B	50 x 28	1,400	72	72	87	70	49	36	39	42
TREVINO	33 x 26	858	42	30	54	30	21	24	24	24
SUTTON	32 x 26	832	42	30	54	30	21	24	24	24
NELSON	33 x 26	858	42	30	54	30	21	24	24	24
HOGAN	33 x 26	858	42	30	54	30	21	24	24	24
KITE	31 x 25	775	42	24	47	30	21	18	24	24
CRENSHAW	26 x 21	546	25	18	33	10	7	18	15	18
WORCESTER BOARDROOM	24 x 22	528	-	-	-	-	-	12	-	-

Sixth Floor



	DIMENSIONS L X W	SQUARE FOOTAGE	THEATRE	CLASSROOM	RECEPTION	ROUNDS OF 10	CRESCENT ROUNDS OF 7	CONFERENCE	U-SHAPE	HOLLOW SQUARE
SIXTH FLOOR										
WHITWORTH	47 x 29	1,363	63	42	80	50	35	30	36	36
RAWLS	33 x 25	825	49	30	55	40	28	24	30	30
ZAHARIAS	33 x 22	726	42	30	45	30	21	24	24	24

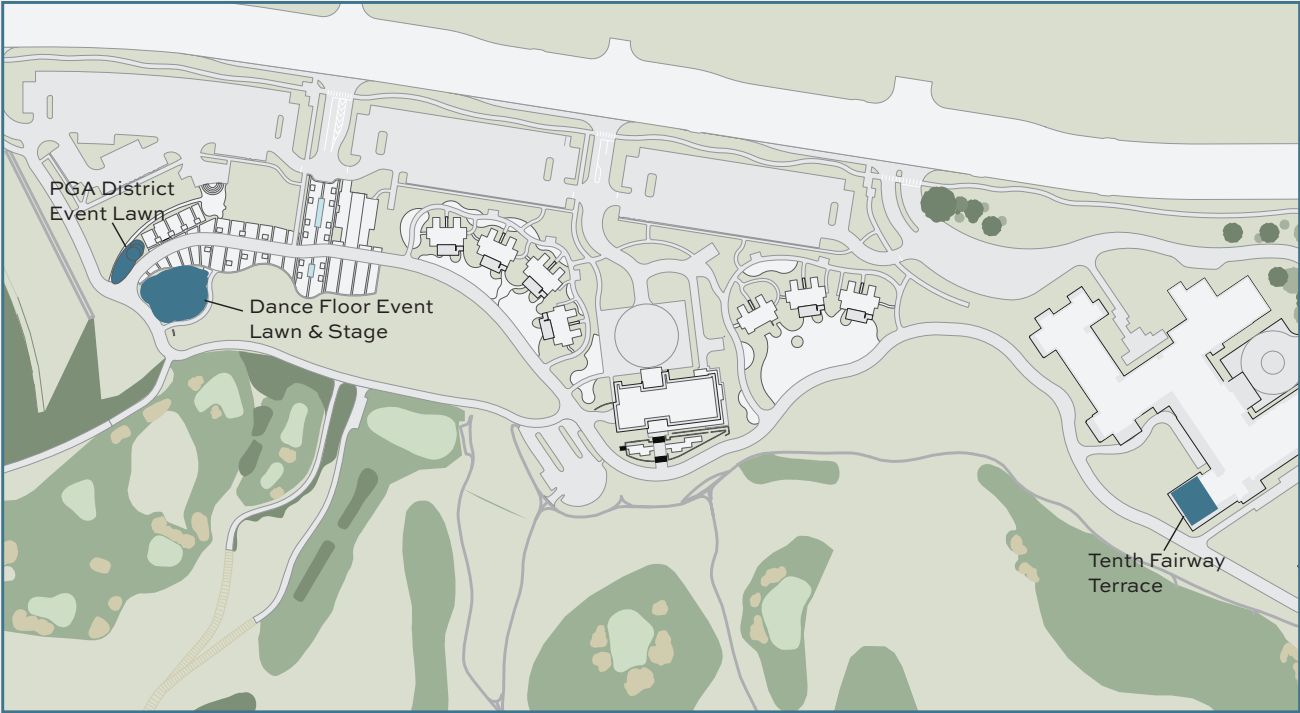
Panther Creek Pavilion



	DIMENSIONS L X W	SQUARE FOOTAGE	THEATRE	CLASSROOM	RECEPTION	ROUNDS OF 10	CRESCENT ROUNDS OF 7	CONFERENCE	U-SHAPE	HOLLOW SQUARE
PANTHER CREEK PAVILION	106 x 47	4,982	330	300	300	270	189	96	102	120
PATIO	-	3,015	-	-	275	210	-	-	-	-
EVENT LAWN	-	9,375	741	-	1,206	630	-	-	-	-

Outdoor Event Venues

(NON-CONFERENCE CENTER)



	SQUARE FOOTAGE	THEATRE	RECEPTION	ROUNDS OF 10
OUTDOOR EVENT VENUES				
PGA DISTRICT EVENT LAWN	5,580	-	350	260
DANCE FLOOR EVENT LAWN	5,214	360	400	350
TENTH FAIRWAY TERRACE	2,800	128	200	90

Resort Map



- A** PGA Coaching Center
- B** Fields Ranch Practice Facility
- C** Ice House
- D** The Dance Floor Event Lawn
- E** The Swing
- F** The Dance Floor
- G** PGA District Shopping & Dining
 - Lounge By Topgolf
 - Margaret's Cones & Cups
 - PGA Shop
 - Gimme Toys
 - Blue Lacy Mercantile
 - Vineyard Vines
- H** Ranch Houses 1-4
- I** Ranch Houses 5-7
- J** Fields Ranch Clubhouse
 - Ryder Cup Grille
 - Fields Ranch Golf Shop
- K** The Bunker
- L** Omni PGA Frisco Resort & Spa
 - Trick Rider
 - The Apron Kitchen + Bar
 - Toast & Tee Coffee Collective
 - Green Cactus Cafe
 - Mokara Spa
 - The Lookout
 - Resort Pools
 - Meeting & Event Space
 - Prairie Rose
 - The Collective Green
- M** Conference Center
 - UPS Store
- N** Self-Parking/Shuttle
- O** Panther Creek Pavilion
- P** Ranch Houses 8-10

Frisco Highlights

Frisco, Texas is a thriving and rapidly expanding city located just 25 miles north of Dallas. As part of the Dallas-Fort Worth metroplex, Frisco is renowned for its vibrant community, exceptional schools, and abundant recreational opportunities. The city masterfully combines modern amenities with a rich historical backdrop, featuring attractions like the Frisco Heritage Museum and a bustling shopping and entertainment district. Whether you're a family, a professional, or a visitor, Frisco offers a dynamic and welcoming environment for all.

ARTS & CULTURE

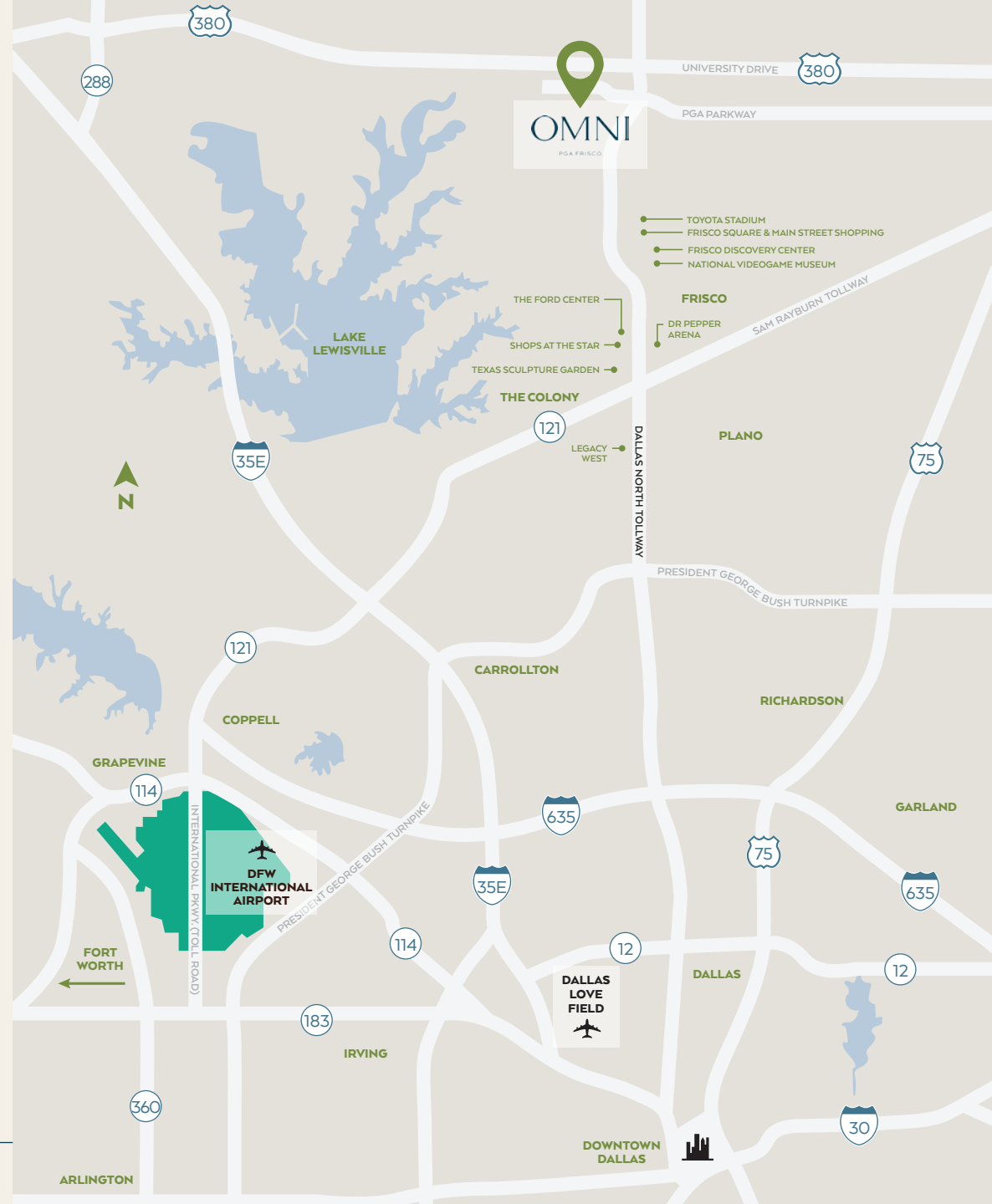
- Frisco Discovery Center | 6 miles
- Heritage Museum | 6 miles
- National Videogame Museum | 9 miles
- Museum of the American Railroad | 9 miles
- Texas Sculpture Garden | 9 miles

SPORTS & RECREATION

- Toyota Stadium | 9 miles
- The Ford Center | 12 miles
- Comerica Center | 12 miles
- Dr Pepper Ballpark | 12 miles
- iFLY Dallas | 13 miles

AIRPORTS

- Dallas Fort Worth International Airport (DFW) | 28 miles
- Dallas Love Field (DAL) | 33 miles



Notes

OMNI

PGA FRISCO

4341 PGA PARKWAY, FRISCO, TX 75033

OMNIPGAFRISCO.COM