

# Meetings & Event Guide.

OMNI AMELIA ISLAND RESORT & SPA



OMNI  
AMELIA ISLAND

# Table *of* Contents

MEETINGS & EVENTS OVERVIEW.....	01
ABOUT.....	02
GUEST ROOMS & SUITES.....	04
DINING EXPERIENCES.....	05
WELLNESS.....	06
GOLF.....	07
ACTIVITIES & TEAM BUILDING.....	08
EVENT SPACES TO REMEMBER.....	09
FLOOR PLANS.....	10
HIGHLIGHTS.....	13





# Meetings & Events THAT MAKE WAVES.

Off the northeast coast of Florida, beautiful Amelia Island is a serene escape from the bustle of the mainland. Omni Amelia Island Resort & Spa makes the most of this stunning landscape with 402 guest rooms overlooking the expansive Atlantic Ocean, each with a private balcony. With so much beauty to offer, you'll have no difficulty attracting guests to your event.

Omni Amelia Island Resort & Spa was designed for indoor/outdoor meetings, conferences and events. Nearly 29,000 square feet of open-air terraces, lawns and patios are ideal for cocktail receptions and parties in the fresh ocean breezes. Inside, another 51,000 square feet of ballrooms, meeting rooms and pre-function space welcome gatherings of all types.





*about*  
Omni Amelia  
Island Resort & Spa.

**DISCOVER A DIFFERENT SIDE OF FLORIDA**

With premium golf courses, a serene spa, pools for adults and families and so much more, Omni Amelia Island Resort & Spa is a welcome getaway for business travelers and families. Enjoy year-round excursions along the beaches, in the marshes, or among the forests of this diverse island escape.







# An event to remember

- 402 oceanfront rooms, including 29 suites, each with private balconies
- The Villas of Amelia Island offer an additional 150 spacious one-, two-, or three-bedroom villas complete with living areas and full kitchens
- Approximately 80,000 square feet of flexible meeting, event and pre-function space, including nearly 29,000 square feet of outdoor terraces and lawns
- On-site audiovisual equipment services offering the latest technology and Wi-Fi internet access
- 3.5 miles of pristine beaches
- Two 18-hole championship golf courses and one 10-hole golf course featuring an island green and an 18-hole putting course
- Two sparkling pools: the adults-only infinity pool and the family-friendly pool, plus nautical-themed splash pad on the largest pool deck on northeast Florida
- Ten unique dining experiences including coastal Mediterranean-inspired seafood and house made pasta, an all-American steakhouse, pizza and frozen yogurt shop, and a signature breakfast buffet featuring house made items, among others
- Onsite spa and salon offering body treatments, facial treatments and our signature Quartz Sand Table massage and Tropical Blossom Ritual
- Guided nature tours, team building activities, and much more
- 23 Har-Tru® fast-dry clay tennis courts and seven pickleball courts
- 24-hour hotel fitness center and fitness center at Racquet Park with state-of-the-art exercise equipment, group exercise classes and 20-yard indoor lap pool



# Guest rooms & suites.

## BREATHTAKING VIEWS

Each of our 402 guest rooms features balconies facing the ocean and are a delightful place to welcome an energizing sunrise during breakfast or sip an evening cocktail while enjoying the sweeping views. The beautiful natural surroundings are ever-present, including the views of the expansive tree canopy and sunset from the open-air breezeway that leads you to your guest room.

The Villas of Amelia Island offers an additional 150 single and multi-bedroom options. Choose from traditional hotel room accommodations, a spacious one-, two-, or three-bedroom villa complete with living area and full kitchen, or private vacation homes with up to four bedrooms.





# Dining experiences.

Cuisine inspired by the region's culture and ingredients have earned Omni Amelia Island Resort & Spa a reputation for excellence in culinary offerings. With ten dining options to choose from, the resort provides guests with a wide range of offerings from casual to fine dining.

## **BOB'S STEAK & CHOP HOUSE**

A lively atmosphere offering prime steaks, chops and seafood served by a friendly and knowledgeable staff.

## **FALCON'S NEST**

Aviation-themed restaurant with a full bar, extensive beer menu, great burgers, BBQ, salads and more.

## **FLORABELLE**

Start your day with southern charm, coastal elegance and breathtaking views of the Atlantic Ocean. Savor the flavors of our signature buffet, The Morning Table or explore our thoughtfully curated à la carte menu.

## **MARCHÉ BURETTE**

Southern table and coffee shop. Serving breakfast and an all-day menu to include salads, sandwiches and more.

## **MARSH VIEW**

Southern-inspired, casual fare, a full bar and cigars. The restaurant overlooks vistas of the marsh, Intracoastal Waterway and ninth hole of Oak Marsh Golf Course.

## **MELLOW YELLOW**

A vibrant frozen yogurt shop featuring nine refreshing flavors and a wide array of toppings! Indulge in a tasty and customizable experience.

## **NATURAL SLICE**

Surf-inspired pizza joint serving fresh ingredients on hand-tossed dough.

## **OCEANSIDE**

As casual as the beach, Oceanside offers flip-flop friendly views of the ocean with authentic local seafood tastes.

## **SEAGLASS**

Small plate specialties, cocktails, beer and wine with a refreshing take on locally sourced ingredients served daily.

## **VERANDAH**

House-made pasta and seafood with a coastal Mediterranean influence along with an extensive wine list in a relaxing setting.





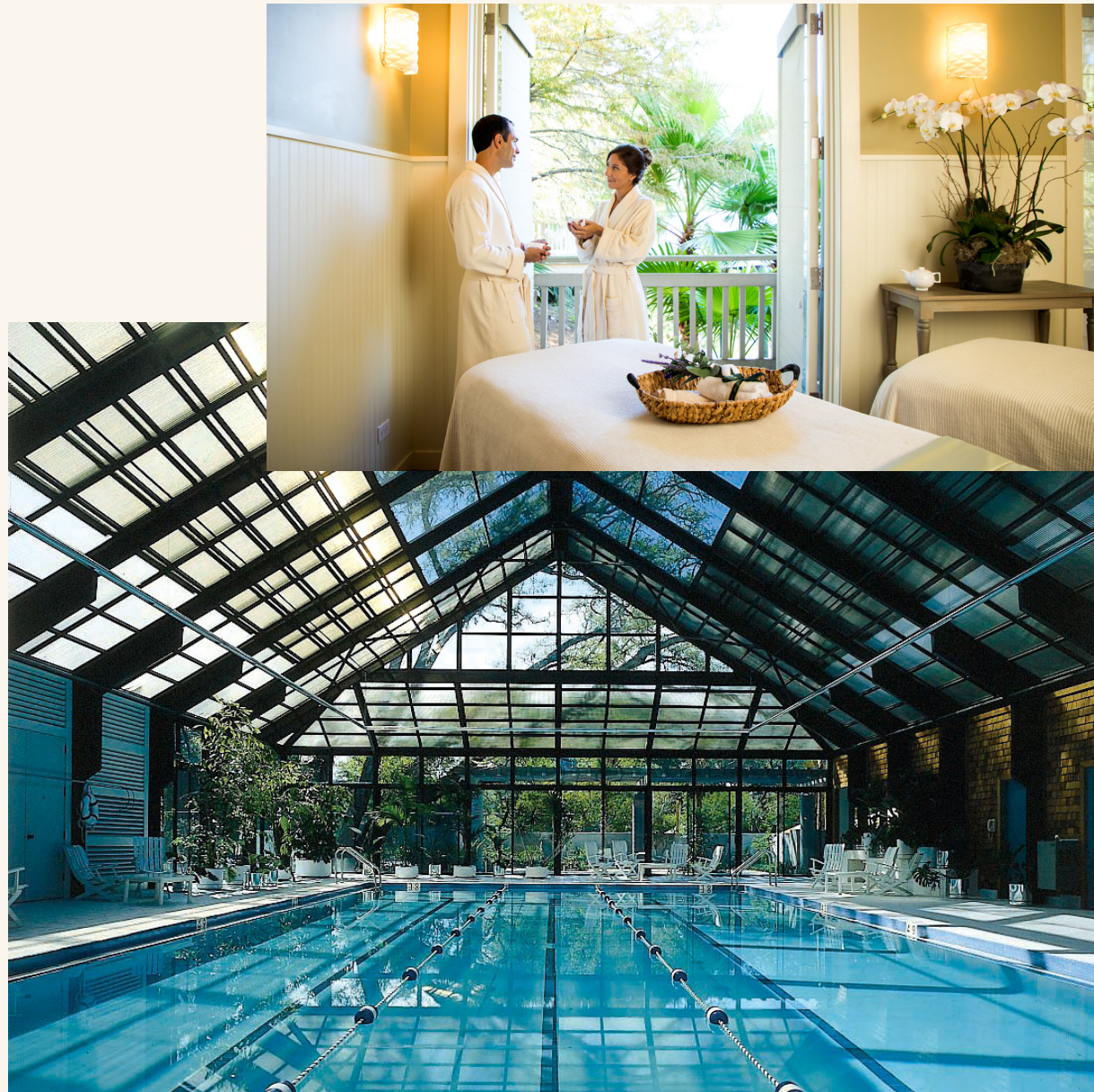
# Wellness.

## RELAX & UNWIND

From the moment you step inside The Spa at Omni Amelia Island Resort & Spa, you'll enter a world of relaxation. Enjoy our vast array of herbal teas and organic citrus water, then rejuvenate with a spa treatment including body massages and facials as well as the signature Quartz Sand Table massage and Tropical Blossom Ritual.

## HEALTH & FITNESS

Guests have access to a 24-hour fitness center in the hotel featuring two Peloton® bikes. In addition, the Racquet Park Health & Fitness Center is fully equipped with state-of-the-art exercise equipment, a 20-yard indoor heated lap pool, accessory shop and full service locker rooms.





# Golf.

## OAK MARSH GOLF COURSE

This Pete Dye-designed course was built in 1972 and is noted for its tight fairways and small greens, meandering along serpentine salt marsh creeks and through the moss draped heritage oaks for which Amelia Island is famous.

Beau Welling Design is renovating the course in 2024 to modernize the layout to meet the requirements of today's game brought on by technological advancements in equipment, enhance the aesthetic attributes of the 18, and provide a high-quality and consistent playing experience.

## LITTLE SANDY SHORT COURSE

This Beau Welling-designed short course provides a traditional yet fun-focused golf experience for all ages and abilities. Little Sandy features 10 holes nestled around Red Maple Lake, ranging from 30 to 125 yards, and an 18-hole putting course.

## LONG POINT GOLF COURSE

The exclusive members-only Amelia Island golf course is designed by Tom Fazio and offers 18 holes among lush marshes and dramatic sand dunes. The course challenges golfers with natural hazards, tight fairways and elevated greens. The rolling fairways wind through three spectacular and distinctive settings: the magnificent marshes, the thick oak and pine forest, and the scenic oceanfront dunes.





# Activities & team building.

With more than nine departments and 100 associates under the recreation division, this award-winning team of professionals is known for their passion and creating superior resort recreation programs year after year.

## TEAM BUILDING

Programs include Island Survivor, Road Rally, Capture Quest, Care Pack Programs and more.

## GROUP RESORT ACTIVITIES

Create a fun and memorable experience for your attendees with guided kayak, Stand-up Paddleboard or Segway™ tours, eco bike hikes, Turtle Talk and other unique activities.

The group recreation team can also help build your program with organized fitness and wellness activities, games and other local experiences including deep-sea fishing charters, catamaran and trolley tours.







# Event spaces to remember.

See how a change in scenery can elevate your next program. These unique locations will ensure your next event is one to remember, in a place they'll never forget.

## **WALKER'S LANDING**

Enjoy sprawling views of the Intracoastal Waterway, along with incredible sunset views from an expansive wrap-around deck. The interior features hardwood floors, a fieldstone fireplace, and surrounding windows. Indoor seating available for 180 people

## **MARSH VIEW DECK**

This spacious deck is surrounded by Spanish moss-draped live oak trees. This space also offers a fire pit and panoramic views of the Intracoastal Waterway and Oak Marsh golf course, perfect for sunset viewing.

## **THE SPROUTING PROJECT**

Tucked away like a hidden gem, The Sprouting Project provides an enchanting and whimsical atmosphere. This outdoor space features a garden, outdoor kitchen and bar, greenhouse, barrel room and a large collection of beehives.

## **OAK POINT LAWN**

This stunning outdoor venue features a picturesque lawn overlooking the ninth green of the Oak Marsh golf course. This space is conveniently located adjacent to the Marsh View Deck and offers incredible sunset views.

## **BEACH**

Spectacular ocean views and salty breezes are the perfect combination to deliver that wow factor you're looking for. Elevate your event by adding a fire pit, chairs and supplies to make s'mores.

## **MAGNOLIA GARDEN & TERRACE**

With 11,000 square feet of versatile outdoor space, this location is perfect for hosting large events and can accommodate up to 750 guests for a reception. Conveniently located adjacent to the hotel.

## **OCEAN VIEW ROOM & TERRACE**

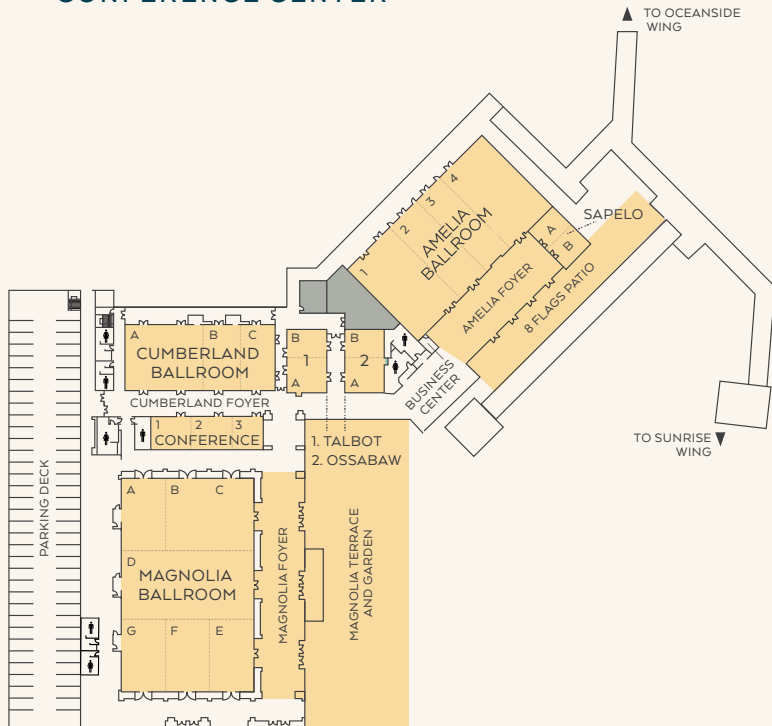
Located in the hotel, the natural beauty of the Oceanview Terrace provides a serene backdrop for any event. An elegant indoor and outdoor space for dining and entertaining. This location can accommodate up to 100 guests for cocktail hour.

## **LITTLE SANDY LAWN & DECK**

This secluded greenspace overlooks Red Maple Lake and our 10-hole short course. It also features a large, covered deck, creating the perfect setting for an intimate event.

# Flexible Event & Meeting Space.

## CONFERENCE CENTER



Meeting room capacities were determined using 72" rounds of 10 (rounds capacity), three chairs per 6'X30" table (U-shape capacity) and three chairs per 6'X18" table (classroom capacity) allowing for minimal audiovisual equipment.

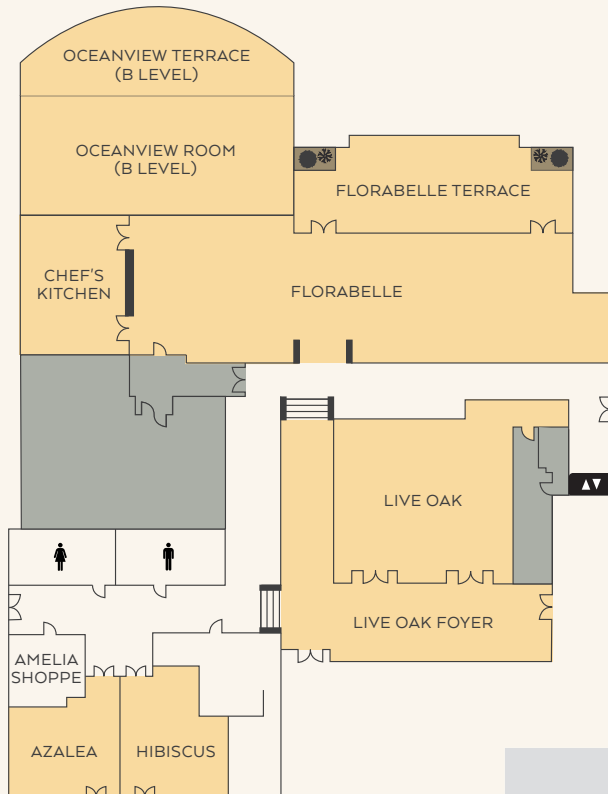


	SQUARE FOOTAGE	DIMENSIONS	CEILING HEIGHT	THEATER	CLASSROOM	BANQUET	RECEPTION	8'X10' EXHIBITS	BOARDROOM
<b>CONFERENCE CENTER</b>									
<b>AMELIA BALLROOM</b>	11,165	77' X 145'	16'	1,000	600	696	1,000	68	32
AMELIA 1 & 2 OR 3 & 4	5,544	77' X 72'	16'	500	300	352	600	34	—
AMELIA 1, 2 & 3 OR 2, 3 & 4	7,392	77' X 96'	16'	700	400	472	700	45	—
AMELIA 1 OR 2 & 3 OR 4	3,696	77' X 48'	16'	350	200	216	350	23	—
<b>AMELIA FOYER</b>	2,821	31' X 91'	—	—	—	120	360	17	—
<b>OSSABAW</b>	1,440	30' X 48'	10'	144	56	80	147	—	—
OSSABAW A OR B	720	30' X 24'	10'	60	32	40	66	—	—
<b>TALBOT</b>	1,440	30' X 48'	10'	144	56	80	147	—	—
TALBOT A OR B	720	30' X 24'	10'	60	32	40	66	—	—
<b>SAPELO</b>	880	22' X 40'	10'	90	44	48	—	—	—
SAPELO A OR B	440	22' X 20'	10'	36	24	24	—	—	—
<b>CUMBERLAND BALLROOM</b>	5,439	49' X 111'	15'/17'	572	323	320	600	34	—
CUMBERLAND A	2,695	49' X 55'	15'/17'	253	140	160	300	16	—
CUMBERLAND B	1,372	49' X 28'	15'/17'	120	64	64	150	—	—
CUMBERLAND A & B	4,116	49' X 84'	15'/17'	450	228	256	425	25	—
CUMBERLAND B & C	2,695	49' X 55'	15'/17'	253	133	160	300	16	—
CUMBERLAND C	1,323	49' X 27'	15'/17'	120	64	64	150	—	—
<b>CONFERENCE 1</b>	645	25' X 26'	10'	48	24	—	—	—	—
<b>CONFERENCE 2</b>	750	25' X 30'	10'	52	30	—	—	—	—
<b>CONFERENCE 3</b>	570	25' X 23'	10'	40	18	—	—	—	—
CONFERENCE 2 & 3	1,325	25' X 24'	10'	96	57	64	130	—	—
<b>MAGNOLIA BALLROOM</b>	16,825	168' X 100'	22'	1,865	1,200	1,100	1,600	104	—
MAGNOLIA A OR G	1,982	57' X 34'	22'	216	99	120	190	12	—
MAGNOLIA B, C, E OR F	1,867	57' X 33'	22'	205	99	120	180	11	—
MAGNOLIA D	5,425	54' X 100'	22'	600	300	350	550	33	—
MAGNOLIA A, B & C OR G, F & E	5,700	57' X 100'	22'	630	342	360	575	35	—
MAGNOLIA A & B OR G & F	3,824	55' X 67'	22'	422	216	240	380	23	—
MAGNOLIA A-D OR D-G	11,100	111' X 100'	22'	1,222	630	480	1,000	—	—
<b>MAGNOLIA FOYER</b>	13,200	—	—	—	—	300	400	—	—
<b>MAGNOLIA GARDEN</b>	11,000	—	—	—	—	550	750	—	—



# Flexible Event & Meeting Space.

LOCATED WITHIN THE HOTEL



Meeting room capacities were determined using 72" rounds of 10 (rounds capacity), three chairs per 6'X30" table (U-shape capacity) and three chairs per 6'X18" table (classroom capacity) allowing for minimal audiovisual equipment.

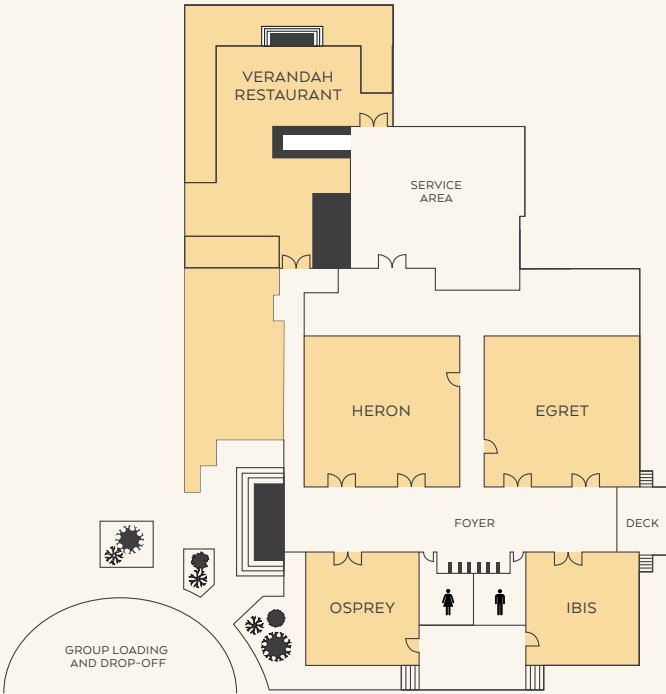


	SQUARE FOOTAGE	DIMENSIONS	CEILING HEIGHT	THEATER	CLASSROOM	BANQUET	RECEPTION	HOLLOW SQUARE	BOARDROOM	U-SHAPE
<b>LOCATED WITHIN THE HOTEL</b>										
<b>AZALEA BOARDROOM</b>	525	21' X 25'	10'	—	—	—	—	—	16	—
<b>HIBISCUS BOARDROOM</b>	589	19' X 31'	10'	50	24	24	50	20	20	21
<b>LIVE OAK</b>	1,845	41' X 45'	10'	205	84	104	180	48	—	36
<b>OCEANVIEW ROOM</b>	2,210	65' X 34'	10'	—	—	80	150	—	—	—
<b>CHEF'S KITCHEN</b>	852	33' X 25'	—	—	—	—	—	—	—	—
<b>FLORABELLE</b>	—	—	—	—	—	135	135	—	—	—
<b>LIVE OAK FOYER</b>	1,000	—	—	—	—	40	100	—	—	—



# Flexible Event & Meeting Space.

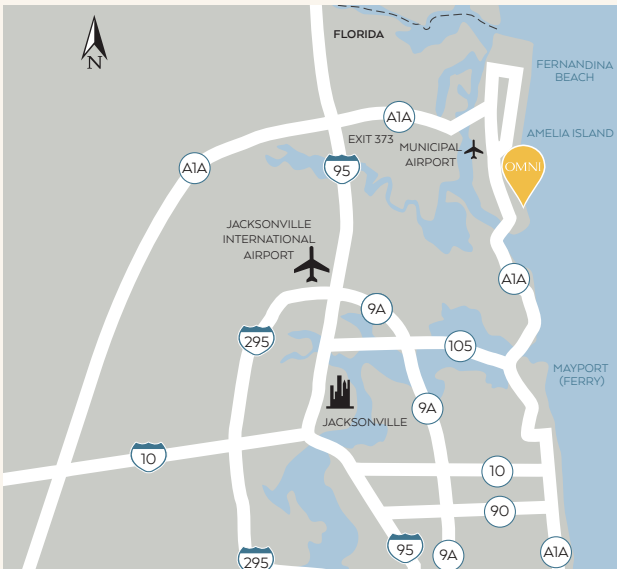
## RACQUET PARK CONFERENCE CENTER



Meeting room capacities were determined using 72" rounds of 10 (rounds capacity), three chairs per 6'X30" table (U-shape capacity) and three chairs per 6'X18" table (classroom capacity) allowing for minimal audiovisual equipment.



	SQUARE FOOTAGE	DIMENSIONS	CEILING HEIGHT	THEATER	CLASSROOM	BANQUET	RECEPTION	HOLLOW SQUARE	BOARDROOM	U-SHAPE
<b>RACQUET PARK CONFERENCE CENTER</b>										
EGRET/HERON	2,070	46' X 45'	10'	198	112	112	200	64	—	48
IBIS/OSPREY	1,088	34' X 32'	10'	102	40	64	100	40	—	32
VERANDAH RESTAURANT	—	—	—	—	—	134	—	—	—	—
<b>SANDCASTLES LOCATED IN CONDOMINIUM</b>										
SANDCASTLES I	597	22'4" X 26'9"	8'	48	32	—	—	24	—	20
SANDCASTLES II	518	19'10" X 26'	8'	39	24	—	—	—	—	—
<b>OUTDOOR VENUES</b>										
OCEANVIEW TERRACE	3,600	120' X 30'	—	—	—	96	150	—	—	—
WALKER'S LANDING	3,825	45' X 85'	—	—	—	180	250	—	—	—
MAGNOLIA TERRACE AND GARDEN	11,000	—	—	—	—	500	750	—	—	—
8 FLAGS LAWN & PATIO	3,600	—	—	—	—	300	400	—	—	—
OAK POINT LAWN	7,000	90' X 75'	—	—	—	300	500	—	—	—
FLORABELLE TERRACE	—	—	—	—	—	60	100	—	—	—
CANOPY PARK	—	—	—	—	—	120	225	—	—	—
THE SPROUTING PROJECT	—	—	—	—	—	120	200	—	—	—
BEACH	—	—	—	—	—	350	500	—	—	—



**OMNI AMELIA ISLAND RESORT & SPA**  
**39 BEACH LAGOON ROAD,**  
**AMELIA ISLAND, FLORIDA 32034**  
**[OMNIHOTELS.COM/AMELIAISLAND](https://omnihotels.com/ameliaisland)**

# Amelia Island

## *highlights.*

Amelia Island is a tranquil beachfront playground. Dunes of Appalachian quartz sand frame the beaches, and lowland salt marshes with moss-draped oak trees provide a fascinating counterpoint to the ocean views. Visit historic sites like the Civil War-era fort at Fort Clinch State Park, and wander the charming Historic Downtown Fernandina Beach with architecture dating back to the 19th century.

### AIRPORTS

Jacksonville International Airport (JAX) | 40 min

Fernandina Beach Municipal Airport (for private aircraft) | 15 min







OMNI AMELIA  
ISLAND

OMNIHOTELS.COM/AMELIAISLAND  
AIPRST.LEADS@OMNIHOTELS.COM